

NAWIC

Granite State

*Building Connections. Empowering Women.
Leading the Industry.*

Fall- Winter Issue | October 2025- March 2026



Granite State, NH



“The NAWIC Granite State Chapter was truly honored to be part of Tuscan Village’s inaugural group tour!”

– Sara Ihle

Featuring:

8 Past Events!

Committee Spotlights!

Upcoming Events!

CONTENTS

1. Redimix Companies Site Tour and Lunch & Learn	3
<hr/>	
2. Girls at Work Donation Collection & Evening of Volunteering	4
<hr/>	
3. Holiday Social at Harvey Construction	5
<hr/>	
4. NEF Block Kids Event	6
<hr/>	
5. Carnegie Professional Development Webinar with Deb Kaplan from Dale Leaders Who Build: Build Trust, Credibility & Respect	7
<hr/>	
Women In Construction Week	
<hr/>	
6. Tuscan Village Tour of Epicurean and Whole Foods	8
<hr/>	
7. WIC Week Breakfast	9
<hr/>	
8. NAWIC & NH-WTS Speed Networking Event	10
<hr/>	
9. Upcoming Events	11
<hr/>	
10. Committees	12-14
<hr/>	
11. Board of Directors	15

REDIMIX COMPANIES INC.

SITE TOUR AND LUNCH & LEARN



On October 22, 2025, Gregory Wortman and Rachel Angelias from Redimix Companies hosted a fantastic tour of the Bow, NH batch plant.

A BIG THANK YOU TO REDIMIX COMPANIES AND THE NAWIC GRANITE STATE CHAPTER FOR SUCH A WELCOMING AND EDUCATIONAL EXPERIENCE!



"Of the many reasons I enjoy working at Redimix Companies, the first that means the most to me is the people with whom I work because they are a kind and hardworking group that allows each individual to bring his/her own uniqueness to the table. The second is the constant intellectual challenge that the industry offers by looking at ways we can better our product to exceed our customers' needs." Rachel Angelias from Redimix Companies



It was all things concrete, in the best way possible, as members of the NAWIC Granite State Chapter stepped behind the scenes at Redimix Companies' Bow batch plant. Attendees got an up-close look at the company's operations, including a live demonstration that brought the science of concrete mixing to life and showcased the teamwork that keeps everything running like clockwork.

The experience didn't stop there. The group later gathered at Redimix's Manchester headquarters for a lunch and learn, where Gregory Wortman, John Hebert, and Jon Fox of Redimix Companies, along with Dominic Di Cenzo of the Northern New England Concrete Association, shared insights on the company's services and current projects. Among the highlights was the impressive Dry Dock Project at the Portsmouth Naval Shipyard.

A day like this proves the *foundation* of our industry is *stronger* when we build together!



GIRLS AT WORK DONATION COLLECTION & EVENING OF VOLUNTEERING

The NAWIC Granite State Chapter came together on Wednesday, November 12, 2025, to support Girls at Work, Inc., a nonprofit dedicated to empowering girls through hands-on building experiences.



"The work I do at Girls at Work is incredibly meaningful to me as an alumni. I have the opportunity to support our builders and their families in the same way Girls at Work had supported me as a kid."

Kaylee Richard from Girls at Work.

Founded in 2000 by Elaine Hamel, the organization helps girls from under-resourced communities build confidence by learning to use power tools and take on new challenges.

Located in the Amoskeag Millyard, Girls at Work offers after-school programs, summer camps, and team builds for girls ages 8–14. During the visit, attendees toured the facility and heard from Kaylee Richard, who shared her journey from participant to professional—bringing the program's impact full circle.

The day was a powerful reminder that when a community comes together, it can help build more than projects—it helps build confidence, opportunity, and a strong foundation for the future. And if this event proved anything, it's that these young builders are already *nailing* it.



In addition to the tour, chapter members and industry partners collected donations to help stock the organization's Kindness Closet and Food Pantry, supporting both the girls and their families.



December 12, 2025

Holiday Social at Harvey Construction

The NAWIC Granite State Chapter rang in the holiday season with a festive social hosted at Harvey Construction, Bringing members together for an evening of connection, celebration, and plenty of holiday cheer. Harvey Construction generously sponsored appetizers for the event, helping set the tone for a warm and welcoming gathering. The evening featured lively team icebreakers, a spirited—and often hilarious—Yankee Swap, and a tempting spread of desserts that kept attendees mingling and laughing throughout the night. The event offered a perfect opportunity for members to connect with colleagues, strengthen relationships, and celebrate the vibrant community of women within the chapter.



“A room full of people who know your worth!” - Maria Marotte

Special thanks to Harvey Construction for their generous sponsorship and for helping make the evening one to remember—it's safe to say the holiday spirit was fully constructed for success.

“We had an amazing time celebrating the incredible women shaping and strengthening our industry” - Harvey Construction





NEF BLOCK KIDS EVENT



Students at South Range Elementary School recently put their creativity to the test during the NEF Block Kids Program, a free national building competition designed to introduce K–6 students to the world of construction. Using interlocking blocks and simple materials like string and foil, participants transformed their ideas into imaginative builds while sharpening problem-solving and critical thinking skills. Members of the NAWIC Granite State Chapter joined volunteers for an engaging afternoon with students, talking with them about their ideas of construction and what they hope to be when they grow up—a highlight that brought plenty of smiles and inspiration on both sides.

A BIG THANK YOU TO KATIE DELAY AND SOUTH RANGE ELEMENTARY SCHOOL FOR MAKING THIS HAPPEN!



Projects were judged by local construction professionals based on creativity and detail, with winners receiving LEGO kits and advancing to NAWIC's regional competition. The event showcased not only impressive builds, but also the excitement and potential of the next generation. The future of construction is already building something pretty amazing!

"60 STUDENTS, 15 VOLUNTEERS, AND 5,000 LEGOS.....NAWIC GRANITE STATE 218 BLOCK KIDS 2026 WAS INCREDIBLY INSPIRING. THESE KIDS WERE SERIOUS ABOUT CONSTRUCTION, AND IT SHOWED IN EVERYTHING THEY BUILT" ~ KATIE DELAY



PROFESSIONAL DEVELOPMENT WEBINAR

*LEADERS WHO BUILD:
BUILD TRUST, CREDIBILITY & RESPECT*



NAWIC Granite State Chapter members recently took part in an engaging leadership session led by Deb Kaplan of Dale Carnegie, focused on building trust, respect, and credibility in the workplace. The interactive discussion combined group conversation with breakout sessions, giving attendees the opportunity to reflect on their own leadership styles and share real-world experiences.



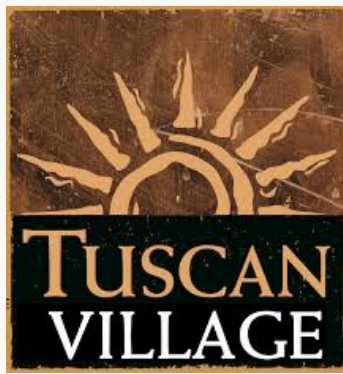
Throughout the session, participants explored practical strategies for strengthening relationships through consistency, communicating with empathy to build credibility, and maintaining respect—even in high-pressure situations. The conversation also highlighted how strong connections can drive collaboration and help teams move forward with clarity and purpose.

The session offered both insight and energy, leaving attendees with actionable tools they can apply right away—and a reminder that strong leadership isn't just built, it's earned through every interaction.

TUSCAN VILLAGE TOUR

EPICUREAN AND WHOLE FOODS

A little snow didn't stand a chance against the NAWIC Granite State Chapter, as members and guests bundled up on March 3, 2026, for a private presentation and tour of The Epicurean at Tuscan Village.

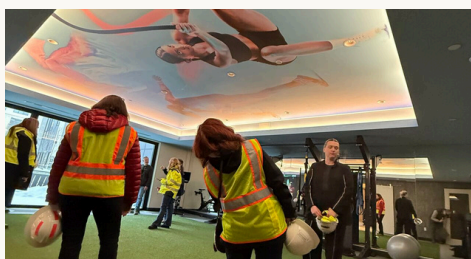


The luxury residential development, featuring 299 units above more than 70,000 square feet of retail space anchored by Whole Foods Market, offered attendees an up-close look at one of the region's most dynamic mixed-use projects.

From the upscale clubroom and courtyard to the fitness center and even a pet spa, The Epicurean impressed with its thoughtful design and high-end amenities. Equally impactful was the behind-the-scenes insight into the complexity of constructing residential living space atop an active commercial environment.

Attendees also heard from key members of the project team, including Tony Nigro, Leslie Lima Vasquez, and Jillian Rosa DeLaricheliere, as well as Abby Goodrich and representatives from Callahan Construction. The team shared the vision behind the development and offered valuable insight into the planning, coordination, and execution required to bring such a large-scale project to life.

From big picture strategy to fine design details, the tour left a lasting impression proving that even in the snow, this project continues to rise above expectations.

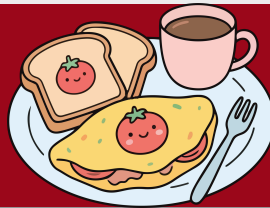


It's clear this development is more than just a *build*, it's a *community* taking shape.

WIC Week Breakfast

TUCKER'S
GOOD EATS • GREAT PEOPLE

NAWIC Granite State Chapter members took a well-deserved midweek break on Wednesday, March 4, 2026, with a lively breakfast at Tucker's. The morning brought together members for meaningful conversation, new connections, and a creative goal-setting activity using NAWIC Bin-GOALS (BINGO)



Attendees reflected on personal and professional goals for the year ahead, all while enjoying a welcoming and energizing start to the day. The event set the tone for a week centered around connection, growth, and celebrating women in construction.

It was the perfect midweek reset proving that sometimes the best way to move forward is to pause, connect, and refocus.

NAWIC & NH-WTS Speed Networking Event



On March 5, 2026, the NAWIC Granite State Chapter co-hosted its second annual Women in Construction Week event with the New Hampshire Women in Transportation Society, bringing professionals together for a lively speed networking evening at The Derryfield.

The event offered more than just an exchange of business cards—it created space for meaningful connections, shared experiences, and genuine conversation among women across construction and transportation industries. Attendees connected over common challenges, celebrated successes, and strengthened a growing network of support.

Special thanks to event organizers Kim Armstrong, Paige Levesque, Sierra Dahl, Stephanie Kizza, and Katie Delay, whose dedication and energy made the evening a standout success.



When women support women, incredible things happen.

"This was such a lively and inspiring event!"
~Paige Levesque



UPCOMING EVENTS

WED
APRIL
15

**3RD ANNUAL CORNHOLE
TOURNAMENT**
5-8 PM | GAME CHANGERS, LONDONDERRY NH

WED-FRI
MAY
13-15

**NORTHEAST REGION SPRING
FORUM**
COURTYARD BY MARRIOTT LAKE GEORGE NY

WED
MAY
27

**LIGHTBLOCKS
MANUFACTURING TOUR**
5:30-7:30 PM | LIGHBLOCKS MANUF. MERRIMACK NH

WED
JUNE
10

CHAPTER MID-TERM ELECTIONS
DETAILS TO COME

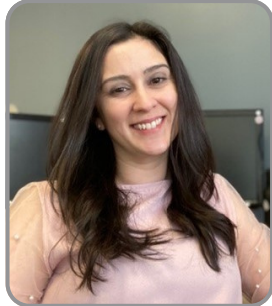
FOR MORE DETAILS & TO REGISTER VISIT NHNAWIC.ORG

COMMITTEES

Behind every initiative is a team of committed leaders—meet the women who make it possible.



Membership



Maria Marrotte
Chair



Elizabeth Morse
Member



Sarah Quinn
Member

Professional Development & Education



Leah Schneider
Chair

WIC Week



Katie Delay
Chair

Strategic Planning



Sara Ihle
Co-Chair



Michelle Trodella
Co-Chair

Safety & Health



Karen Long
Chair

COMMITTEES CONT.



Bylaws



Catherine Schoenenberger
Chair



Elizabeth Morse
Member



Deb Trottier
Parliamentarian



Katie Delay
Chair



Andrea Klein
Member



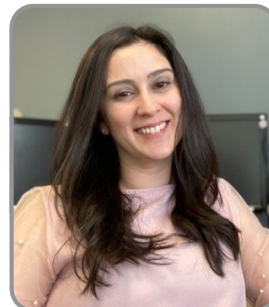
Kristen Perras
Member

NEF Block Kids

Emerging Professionals



Elizabeth Morse
Chair



Maria Marrotte
Member



Lesa Courchaine
Member

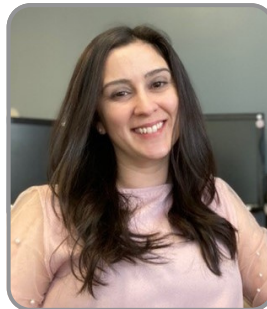
COMMITTEES CONT.



Finance



**Elizabeth
Morse**
Chair

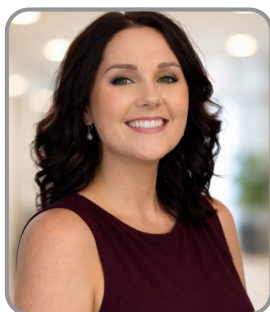


**Maria
Marrotte**
Member

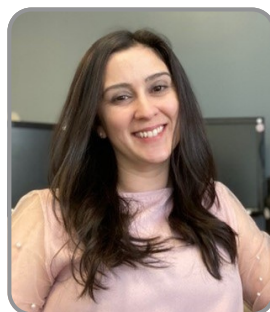
Marketing



Sara Ihle
Chair



Sarah Quinn
Co-Chair



Maria Marrotte
Member



Lorinda Gilbert
Member



President
Sara Ihle



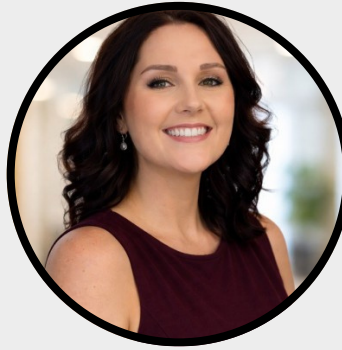
Vice President
Michelle Trodella



**Immediate
Past President**
Trish Jeffrey



Treasurer
Elizabeth Morse



Secretary
Sarah Quinn



Parliamentarian
Deb Trottier



Director
Paula Cantara



Director
Amber Thibault



Director
Lesa Courchaine



Director
Katie Delay



Director
Karen Long

Board of Directors

